

Beavers in Germany - *a cold return*

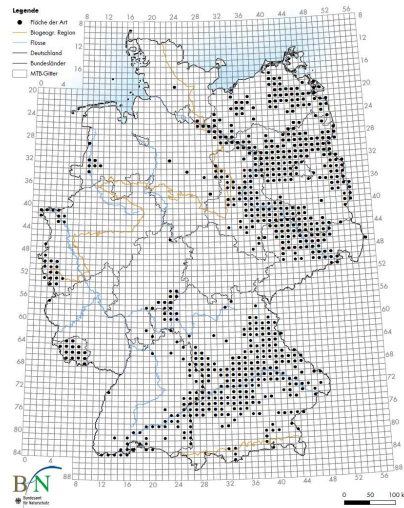
Dr. Thomas A. M. Kaphegyi
Institute for Landscape Management
University of Freiburg

Driving factors for the return of the beaver

- Conservation legislation
- Re-introduction measures

Distribution of the beaver records in Germany

BFN FFH 2007



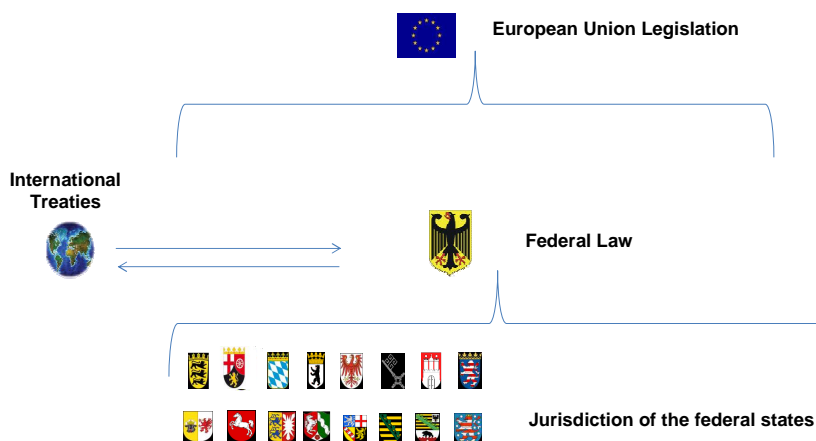
Kaphegyi 20.10.2011

supported by



UNI
FREIBURG

Legal context of the German wildlife management



Kaphegyi 20.10.2011

supported by

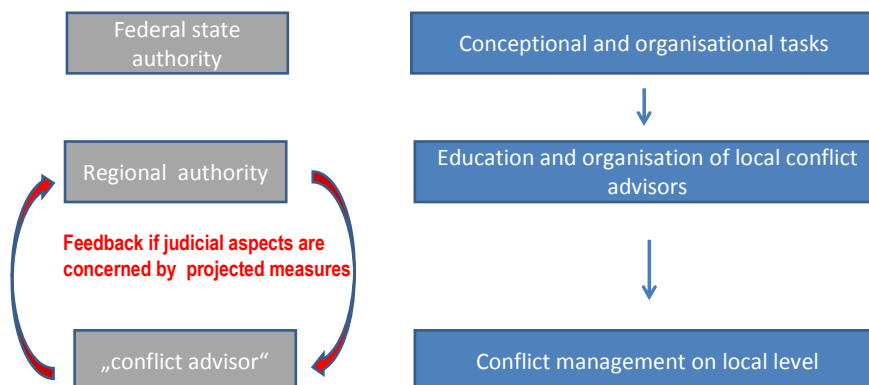


UNI
FREIBURG

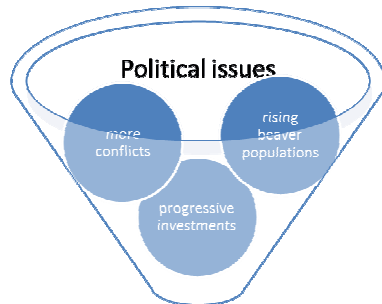
Consequences of the federalistically organised management

- Consolidated monitoring procedures and cooperate data bases are not at hand
- Regular information exchange between federal states is not implemented
- Nationwide management strategies are not available

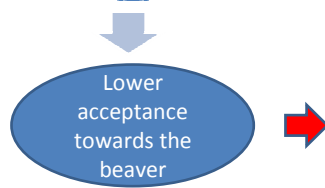
Principal organisational structures of the beaver management within the federal states



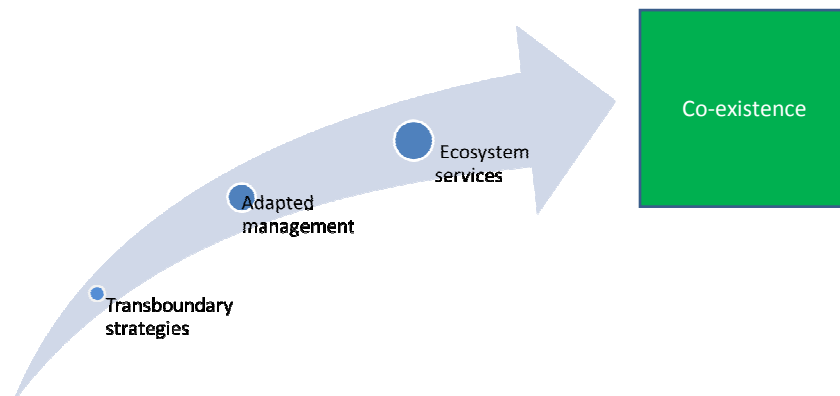
Throwbacks in nature conservation



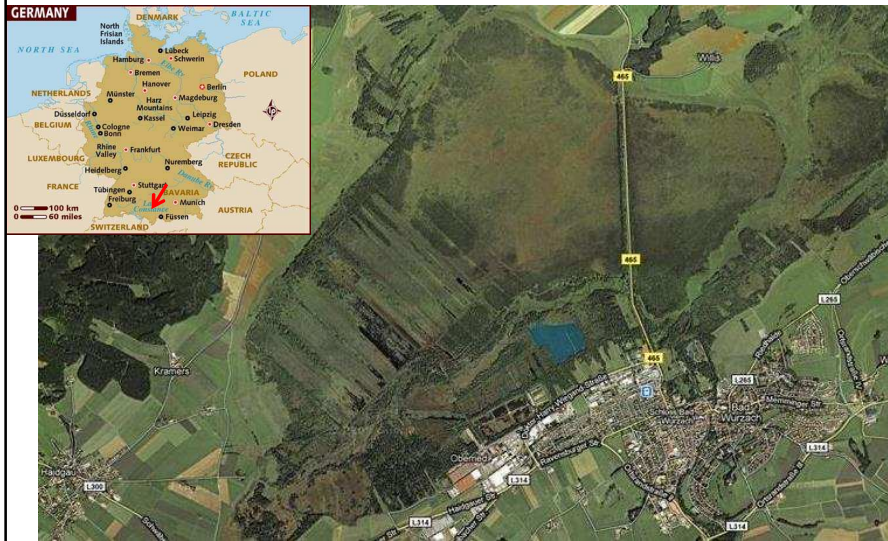
Vortex of denial: Missing comprehensive strategies progressively lower the acceptance towards returning beavers



Reversing the downward spiral....



The Beaver promotes adaptive management



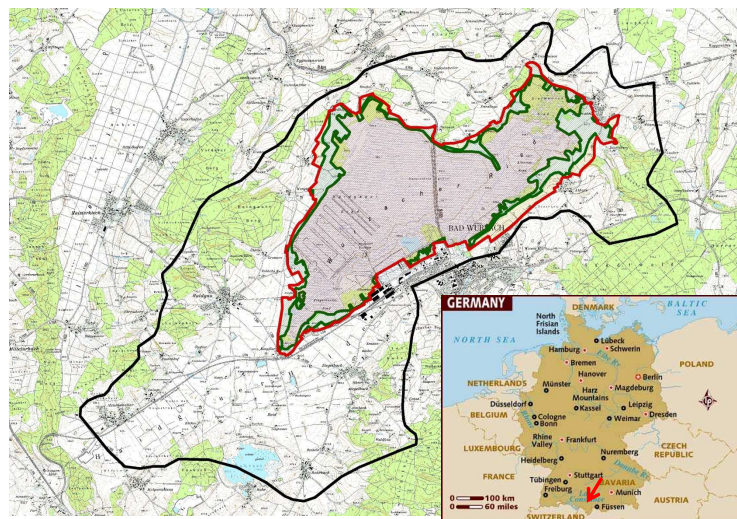
Kaphegyi, 20.11.2011

Supported by



UNI
FREIBURG

The Beaver promotes adaptive management



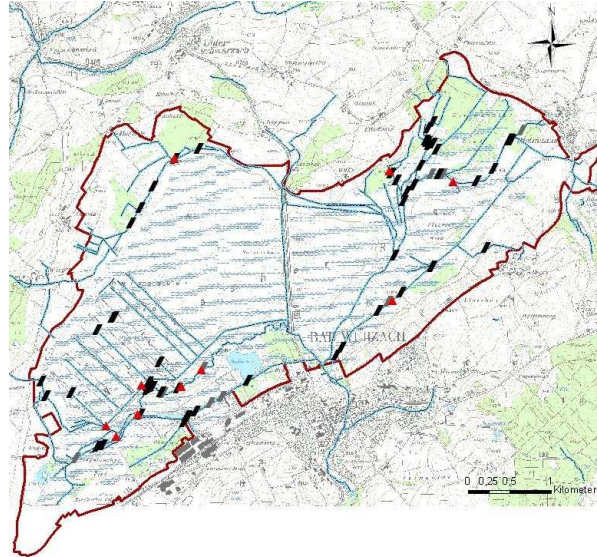
Kaphegyi 20.11.2011

Supported by



UNI
FREIBURG

Beaver lodges and dams in the study area



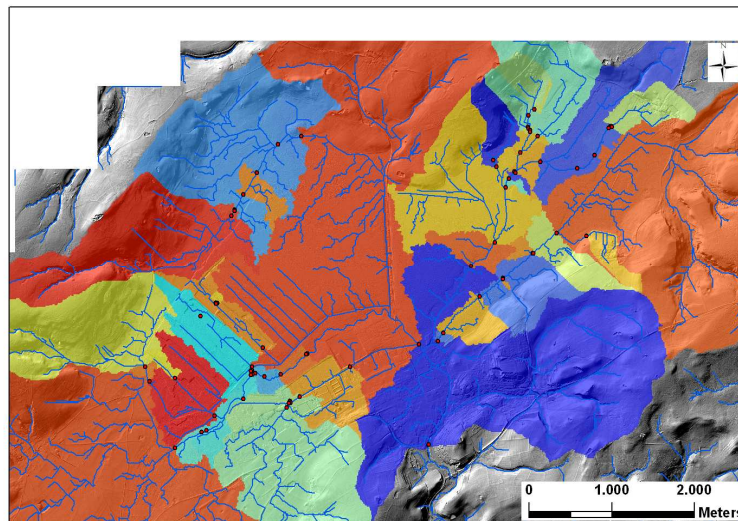
black = beaver dam
red = beaver lodge

Kaphegyi, 20.11.2011

Supported by



Calculating the rewetting impact of beaver dams

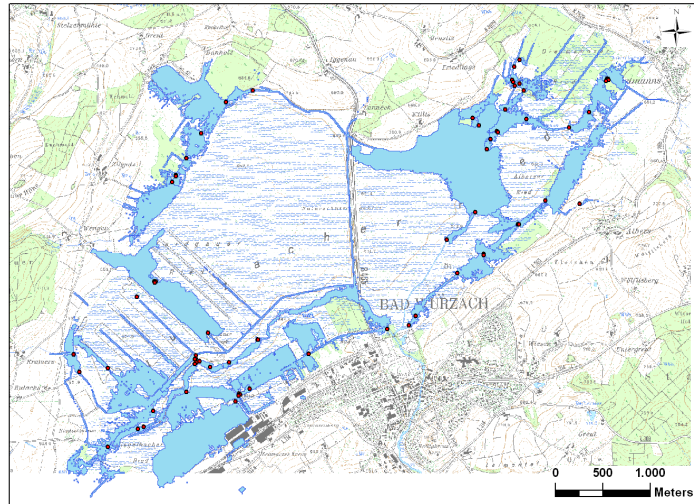


Kaphegyi 20.11.2011

Supported by



Calculating the rewetting impact of beaver dams

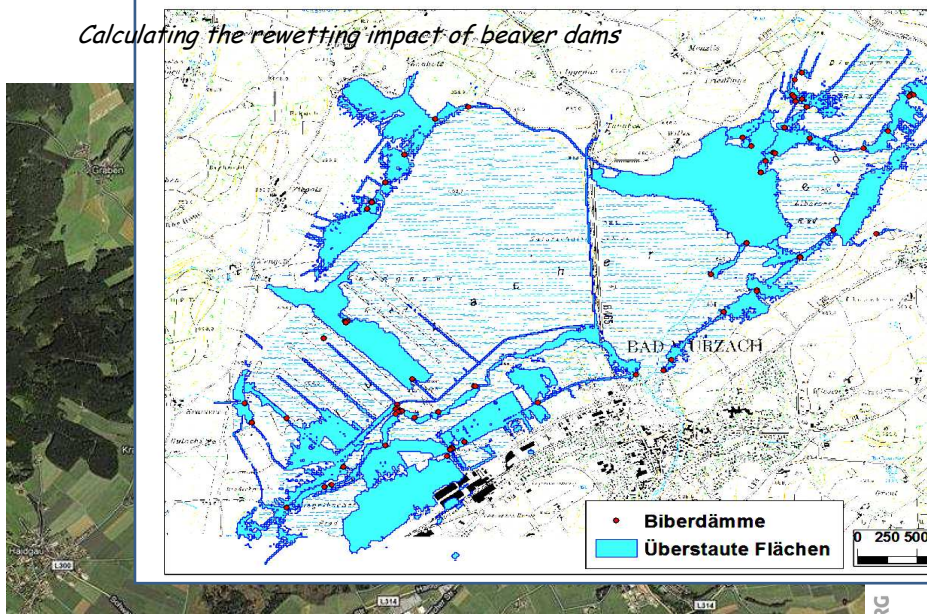


Kaphegyi, 20.11.2011

Supported by



Calculating the rewetting impact of beaver dams

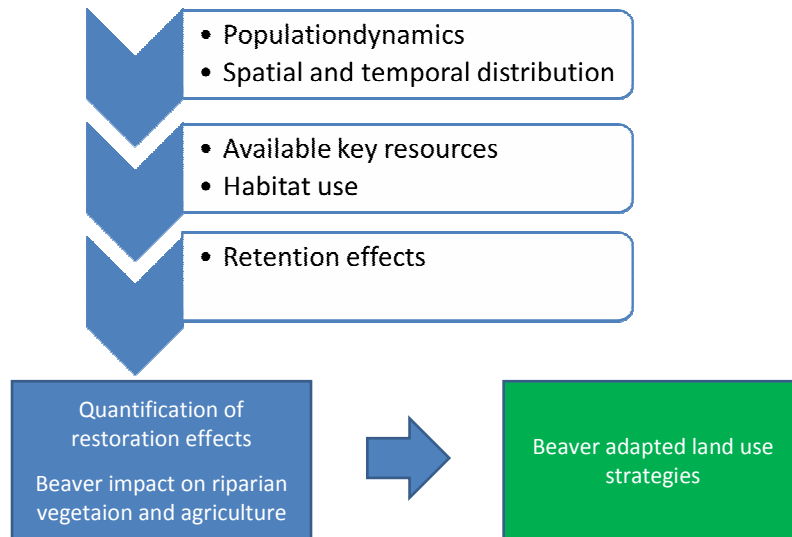


Kaphegyi, 20.11.2011

Supported by



Quantification of restoration effects and ecosystem services



Kaphegyi, 20.11.2011

Supported by



Conclusions

- Individually problem solving is insufficient
- Over-regional evidence based conceptions are required
- Consistent decision making on different administrative levels
- Clear and comprehensive communication of the schemes towards the public

Kaphegyi, 20.11.2011

Supported by

